



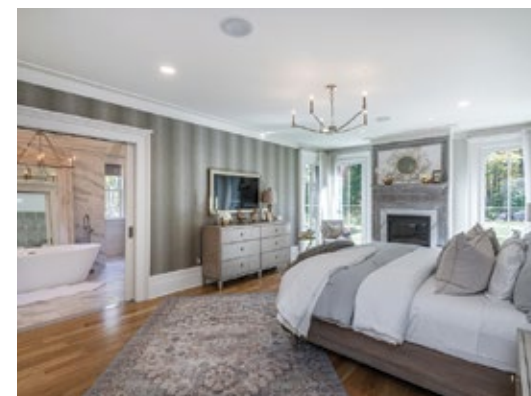
BROOK HOLLOW FARM

Harwinton, Connecticut

KLEMM REAL ESTATE_{Inc}
LITCHFIELD COUNTY'S PREMIER BROKERS

Brook Hollow Farm, Harwinton, CT

Unparalleled excellence in a custom built estate with forever views. Discover the timeless elegance of Brook Hollow Farm, a luxury property blending classic craftsmanship with modern design. Completely private with a long driveway lead to majestic, distant views of Litchfield Hills with lush gardens and stone outcroppings. The open concept of living, dining, kitchen and sunroom detailed with reclaimed antique beams, white oak floors, and custom millwork creates warmth and character. The family room impresses with 30-foot ceilings and a floor-to-ceiling stone fireplace flanked by windows. The chef's kitchen features a 10-foot quartz island, Wolf range, Bosch refrigerator, and Fisher & Paykel dishwasher with a pantry/laundry room, mud room and powder bath. The 1st floor, primary suite offers an 1800s fireplace mantel, French mirrored doors, and a marble bath with an antique vanity, double entry shower & separate tub. Additional features include two fireplaces, library, a whole-house generator, 400-amp service, sound system, sprinkler and security systems with hidden doors and fine trim-work throughout. Upstairs are two en-suite bedrooms with seating area. Gorgeous pool. A porte cochere leads to a 3-car heated and cooled garage. The custom barn offers a full kitchen, bath, laundry, and additional flex space, plus four stalls (one with dog wash), tack room, workshop, and fenced paddocks with garden areas. A rare offering where heritage design meets modern luxury. Stunning!



Property Features

- View
- Horse Property
- Pool
- 4 Stalls
- Generator
- Guest House
- Long Driveway

#1 for Selling & Renting Fine Country Properties!

KLEMM REAL ESTATE Inc.
LITCHFIELD COUNTY'S PREMIER BROKERS

Lakeville/Salisbury 860.435.6789 > Litchfield 860.567.5060 > New Preston 860.868.0505
Roxbury 860.354.3263 > Sharon 860.364.5993 > Washington Depot 860.868.7313 > Woodbury 203.263.4040

klemmrealestate.com

Property Data

9 Steeple Chase Road
Harwinton, CT

10	4	4/1	4,323	12.40±
RMS	BEDS	BATHS	SQFT	ACRES

Price: Upon Request

Listing Agent: Joseph Lorino
860.868.7313 Ext. 110

All Data to be confirmed by Buyer.

Any buyer/lessee must satisfy himself by inspections or otherwise as to correctness of any information – given, written or verbal. No information may be relied upon as fact, and is given entirely without responsibility of Klemm Real Estate, Inc., its associates or seller/lessor. Photographs show only certain parts of property. Any measurements or distances are approximate only. Offering subject to error, omission, changes or withdrawal without notice.

